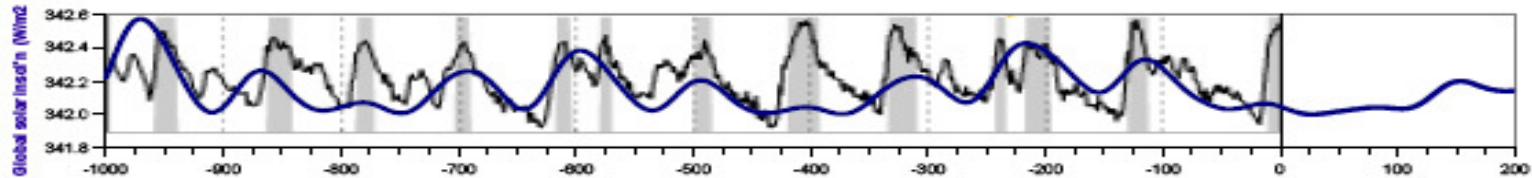


# II. Climate Basics - Astronomy, Geology, Evolutionary Biology

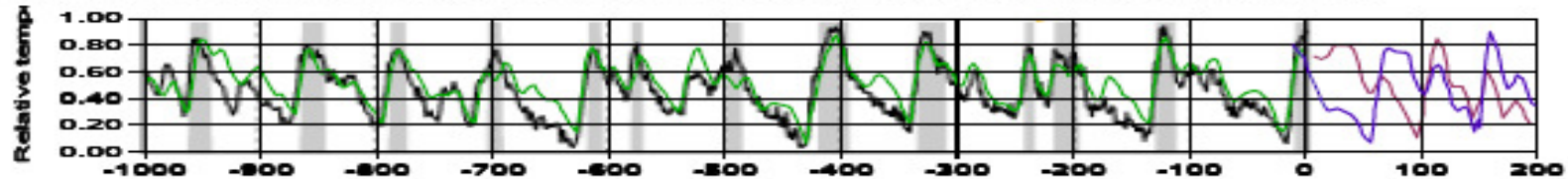
## Milankovic - NOT deglaciation?!

Figure ?? - Graphs of recent glaciation models over the last 1 MyBP

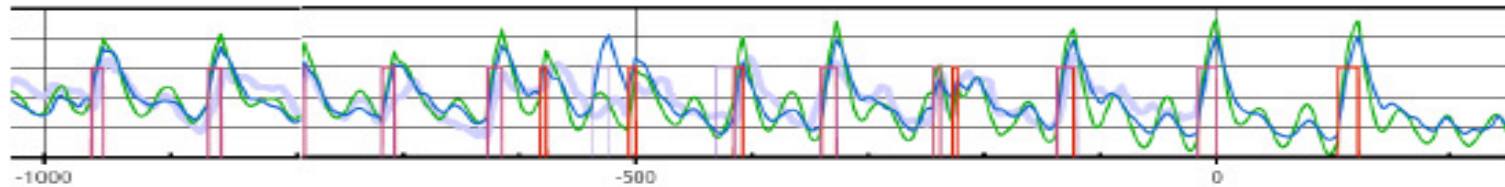
a) Milankovic insolation cycles and 1 My of glaciations (global insolation values), Reference: Laskar et al, Wikipedia



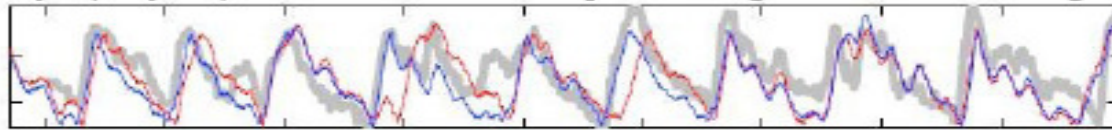
b) Paillard's Milankovic threshold model for 1 My of glaciations, Reference: Frédéric Parrenin, Didier Paillard 2003



c) Howell's variant of Paillard's model for 1 My of glaciation (this paper - non-optimized results from first generation modelling)



d) Tziperman, Raymo, Huybers, Wunsch 2006 - Nonlinear phase locking to Milankovitch forcing



thousand years Before Present (ky BP)

[www.billhowell.ca/Climate and sun/Howell - Glaciation models for the last 6 million years.pdf](http://www.billhowell.ca/Climate%20and%20sun/Howell%20-%20Glaciation%20models%20for%20the%20last%206%20million%20years.pdf)

[www.wikipedia.com](http://www.wikipedia.com), (?Agterberg etc...) Parrenin & Paillard, Tziperman

