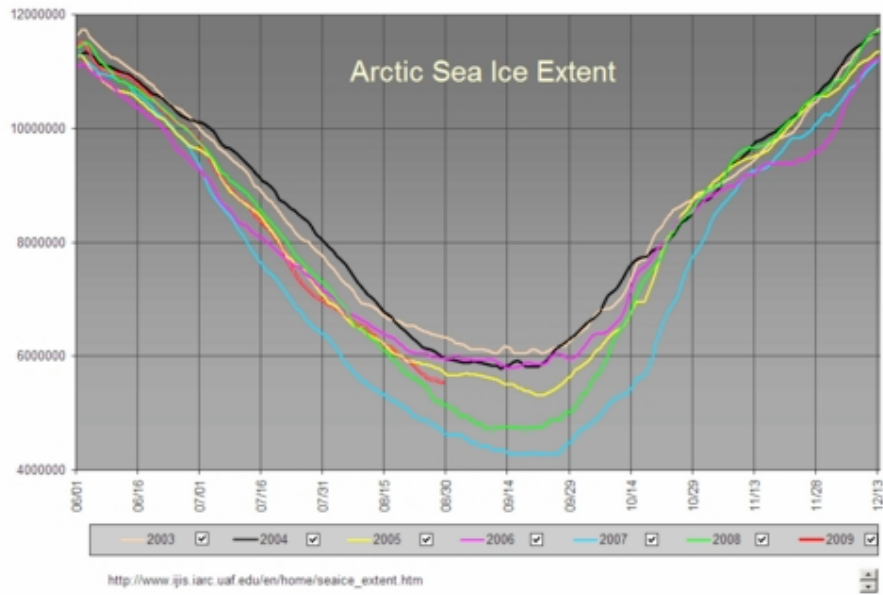


## WAXING AND WANING OF ARCTIC OCEAN ICE COVER



By: [cbrtxus](#)

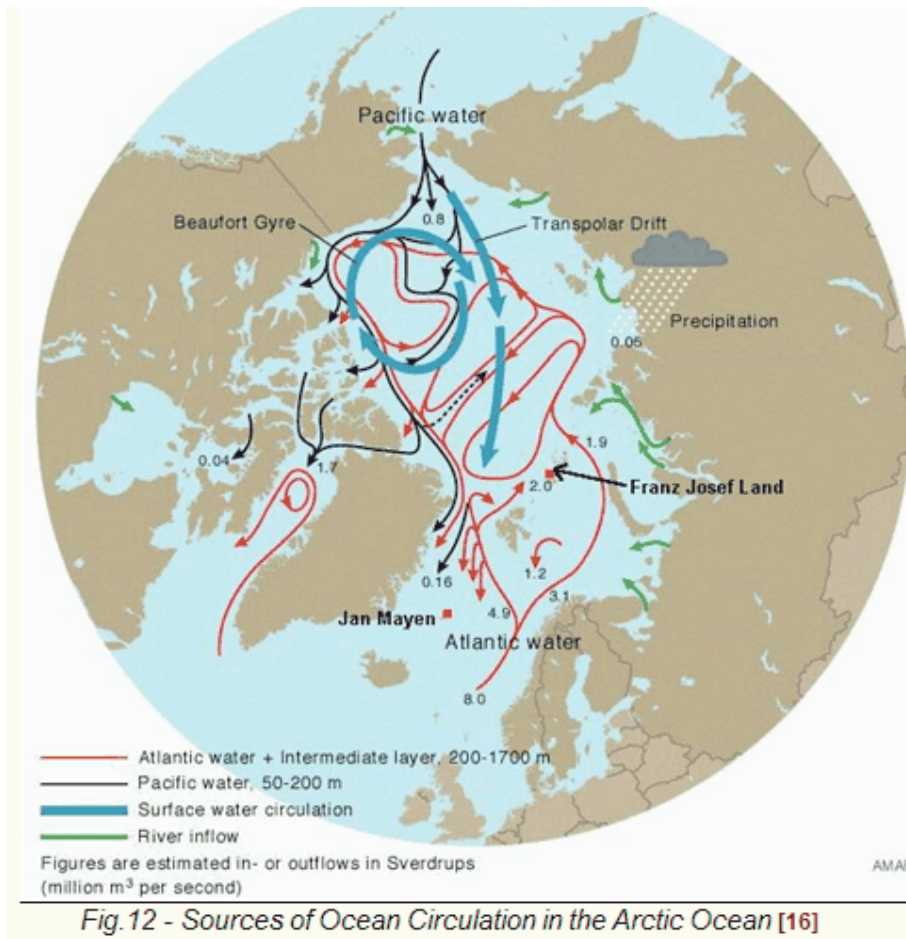
Posted: Aug 30, 2009

This graph shows that summer 2007 was a low ice year (blue), 2008 (green) less so and 2009 (red) looks like cover is returning to normal.

It is the background against which this is taking place that is important:

All the while CO<sub>2</sub> was rising unabated and surface temperature remained constant or were falling. So, What it shows is that there is really no correlation of the sea ice cover with either the carbon dioxide or the temperature fluctuation.

It is generally believed by sceptics of the human-influenced Global Warming hypothesis that Arctic Ocean ice cover is mainly a function of the penetration of warmer Pacific Ocean current which melts the ice from bottom to top, and the "Arctic Gyre" the constant rotation of the ice pack as propelled by wind. The heavy light blue lines tell the story.



You will notice that the Pacific water eventually goes across the basin into the Atlantic, while the Atlantic water swirls around and returns to the Atlantic. What you also see in the picture is the influence on the deeper water circulation of the Alpha, Nansen, Lomonosov cross-basin ridges in the ocean bottom. The surface circulation differs from it. From this it would appear that the Pacific water is warmer than the Atlantic, particularly in years of the warmer Pacific phase of the periodic Pacific Ocean Oscillation.

As Tim Ball also says, Arctic sea ice, the poster boy of the global warming crowd, has preciously little to do with Anthropogenic Global Warming and everything with Pacific ocean oscillation and the wind patterns of the "Polar Mobile High".

A.F.Jacobs

9/2009

oooooooooooooooo